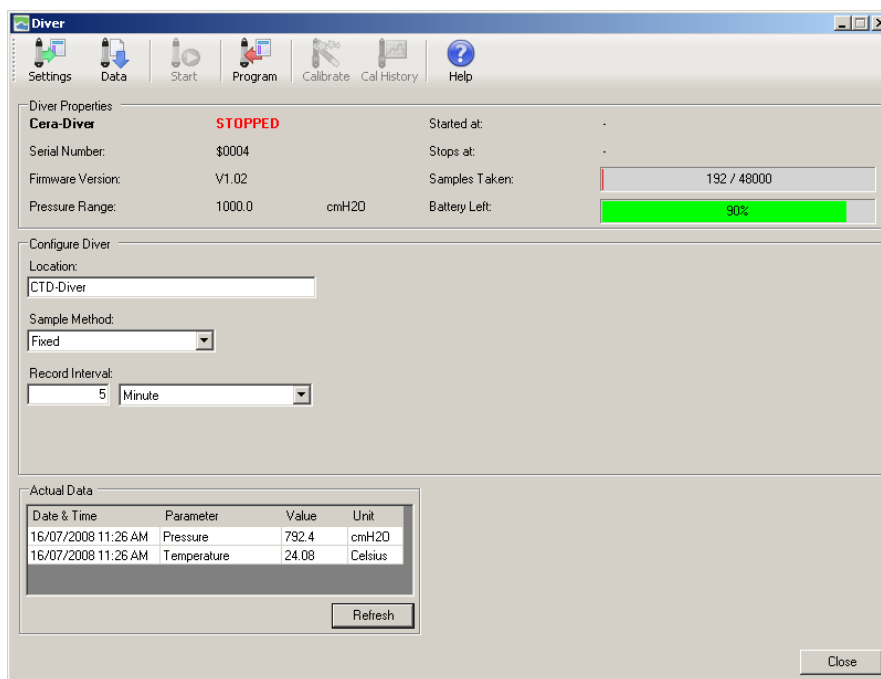


Read Diver Settings

1. Place a Diver into the USB Reading Unit or connect to the PC interface cable. Ensure that your reading device is connected to your computer.

Note: USB Reading Unit or PC interface cable must be connected prior to launching Diver-Office.

2. From the Diver-Office toolbar, select the  **Diver** button. The **Diver** dialog will open displaying the settings and status of the Diver.




Program Diver Settings

Enter the following information in the Diver dialog (shown above):

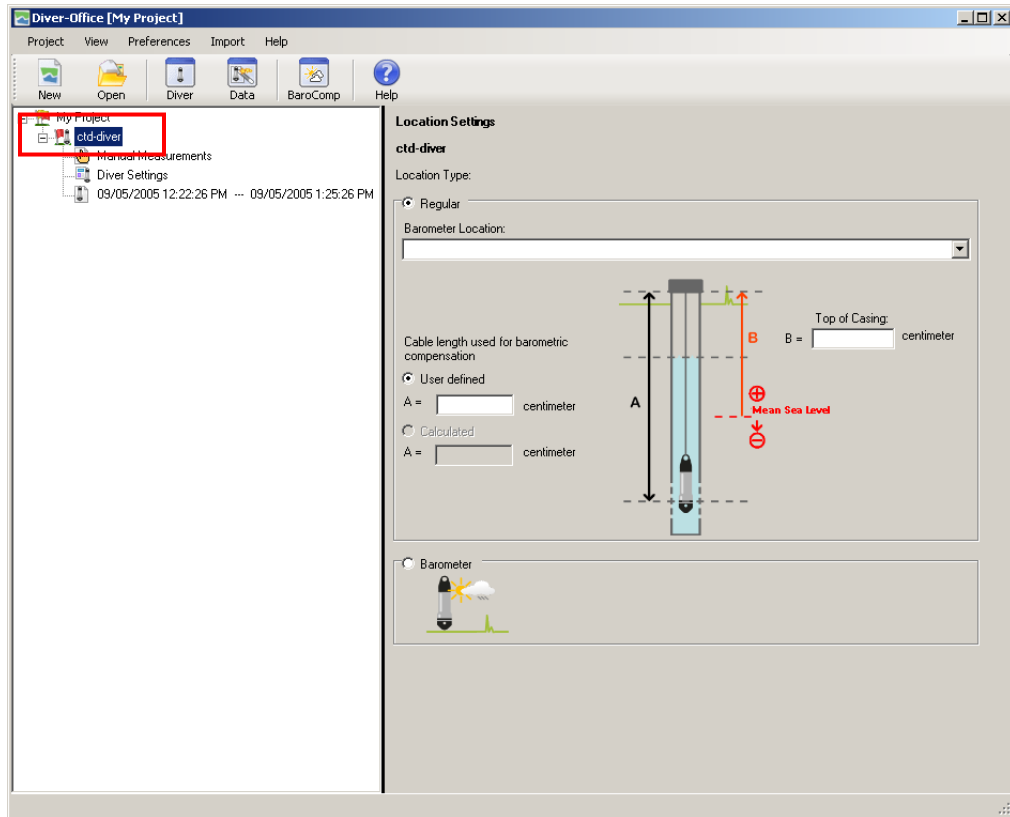
- | | |
|------------------------|------------------------------------------------------------------------------------------------------------------------------|
| Location | location name must be unique |
| Sampling Method | Choose between Fixed , Averaging , Event Based , Setup A, B or C , or User Defined |
| Record Interval | Enter a record interval (0.5 sec – 99 hr)
* Fixed, Averaging or Event Based method only |

Note: CTD-Divers and TD-Divers also require an Altitude value (not shown in image above)

1. Once the settings have been entered, click the  **Program** button from the Diver toolbar.

Defining Location Settings

1. Select the location name from the **Project Tree**. The project settings will load in the adjacent frame.



2. Diver type, either **Regular** or **Barometer**, is automatically assigned but you can manually change this.
3. If Diver type **Regular**, enter the following settings:


Barometer Location Select the corresponding barometer location from the combobox.

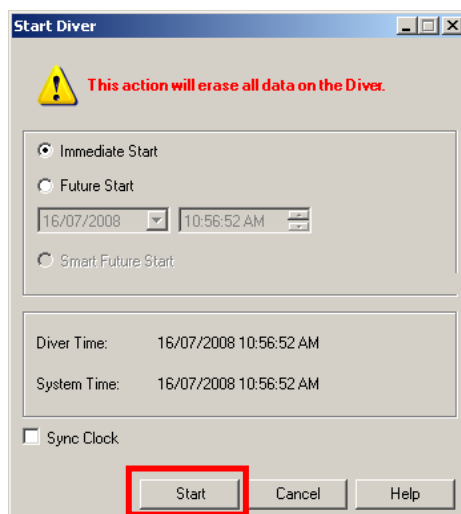
Note: This barometer location must already exist in your project

Cable Length (optional) Enter the cable length measurement at the location

Top of Casing (optional) Enter the top of casing measurement with respect to your vertical reference datum.


Starting a Diver

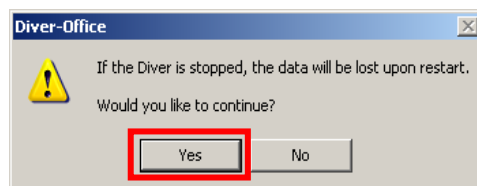
1. Click the  **Start Diver** button from the Diver toolbar.
2. From the Start Diver dialog (shown below), select the appropriate start method, *e.g.*, **Immediate Start**, **Future Start** or **Smart Future Start**. These options are described in more detail in the Diver-Office online help.



3. Click the **[Start]** button to complete the process.

Stopping a Diver


1. Click the  **Stop Diver** button from the Diver toolbar.
2. Click the **[Yes]** button in the warning message that appears.

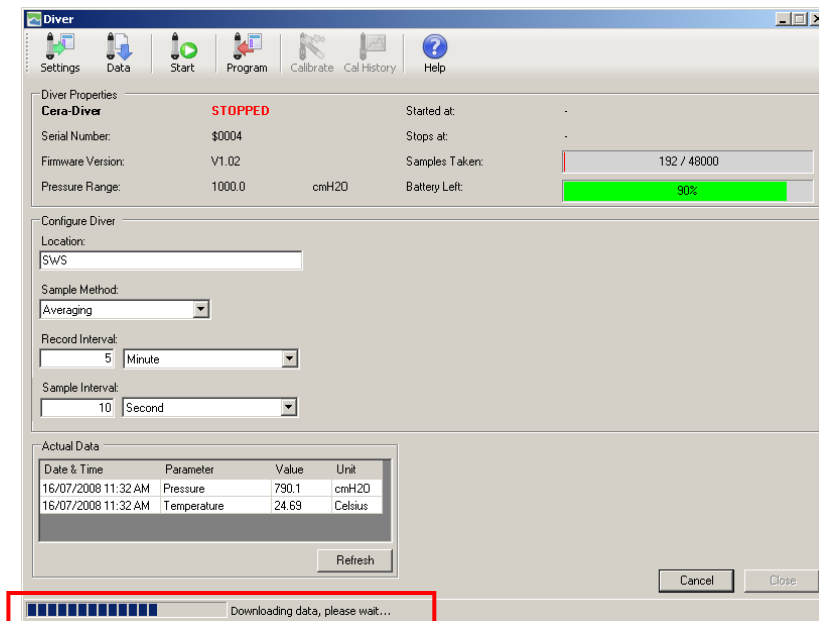


Note: Only the applicable option will show in the Diver dialog.



Downloading Diver Data

1. Click the  **Data** button from the Diver toolbar. The download progress is shown in the bottom left corner of the Diver dialog.



Viewing Downloaded Diver Data

1. Once downloaded, your Diver dataset will be listed in the project tree and shown. (shown below).

