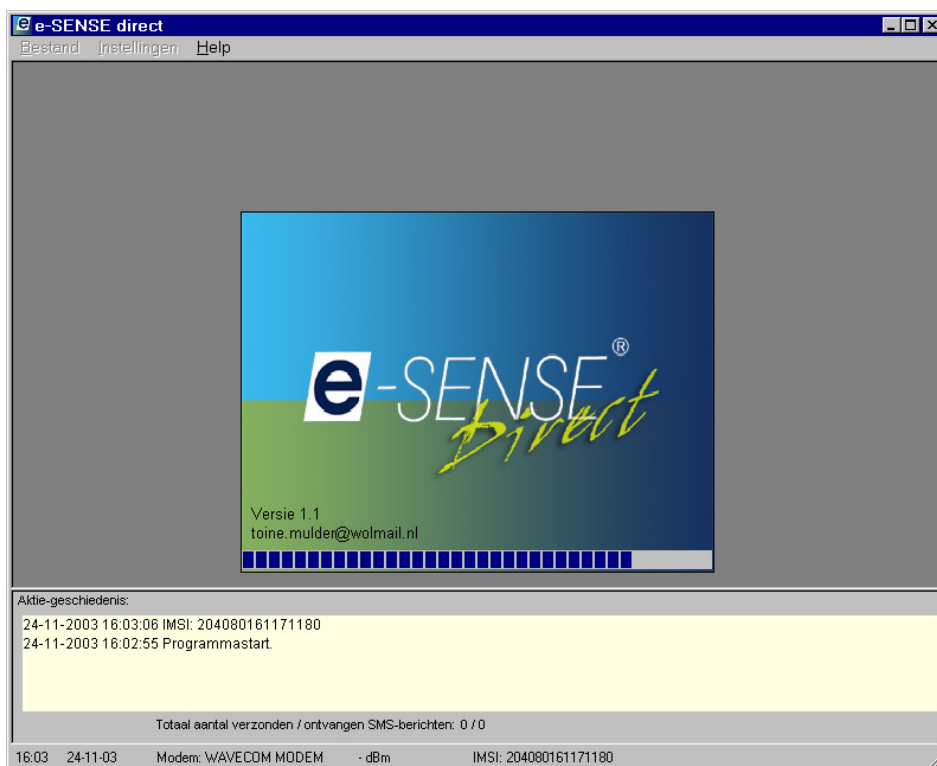


# COMPLEMENTARY INFORMATION

## 11.51.10 SOFTWARE e-SENSE DIRECT



### Description

When installed on a computer, e-SENSE direct takes care of the parameters and storage of data from an e-SENSE measuring system. The export functionality of the e-SENSE direct software is used in order to enable stored measurement data from Logger Data Manager® (LDM) **+** of Microsoft® Excel to be viewed and possibly to be processed.

### General

Windows® versions	:	NT 4, 2000, XP
Menu structure	:	File (Export database, Program access, Setup, Show activity history, Close Window) : Settings (SMS modem settings, Logger settings) : Help (Reregister, Operating instructions, About)
Status bar	:	Time and date, GSM modem type detected, signal strength of GSM modem, current activity program
Activity history window	:	Shows summaries of tasks performed by the program at certain times and on certain dates
Licence types	:	1 to 5, 6 to 25, 26 or more e-SENSE SMS modems

### SMS modem:

Selection	:	By serial number or location (can be configured)
Variable settings	:	Location, wake-up interval, RTC synchronisation (y/n), telephone number PC GSM modem, SMSC telephone number, battery voltage alarm level maximum number SMS per channel



t + 61 2 9894 4511  
f + 61 2 9894 4522  
e sales@aqualab.com.au  
w www.aqualab.com.au

Permanent settings : Telephone number for SMS modem, battery voltage, signal strength

**Dataloggers:**

Selection : By port number and type (per SMS modem)

Variable settings : Location, sample speed, send interval, send start time, altitude, Masterlevel, channel status

Permanent settings : Serial number, instrument ID, battery condition, channel ID, range

**Data export:**

Selection : File type (\*.MON or \*.CSV), desired logging data, time distribution for measurements (1 to 99 hours, days, weeks or months)

Specific features : Automatic export function  
: Settings options for CSV files with regard to parameters that depend on the area, formatting and addition of a header

Technical specifications may change without prior notice.