

# CG Multi-Sensor Platform

## User's Manual



January 21, 2015  
P/N: 998-2205  
Revision N

**TURNER DESIGNS**  
845 W. Maude Ave.  
Sunnyvale, CA 94085  
Phone: (408) 749-0994  
FAX: (408) 749-0998



## Table of Contents

<b>1. Introduction</b>	
1.1 Introduction	4
1.2 Important Note Regarding the Use of the Fluorescein Sensor	4
<b>2. Inspection and Setup</b>	
2.1 Instrument Checklist	5
2.2 Optional Accessories	6
2.3 Installing the Cyclops-7 Sensors	7
<b>3. C-Soft Windows™ User Interface</b>	
3.1 Software Installation and PC Requirements	9
3.1.1 Minimum PC Requirements	9
3.1.2 Software Installation	9
3.1.3 Integration / Interface Adapter Cable Installation	9
3.1.4 PC Software Interface	10
3.2 Software Operation	11
3.2.1 Settings Screen	11
3.2.2 Current Data and Calibration Screen	12
3.3 Calibration Procedures	15
3.3.1 Direct Concentration Calibration	15
3.3.2 Raw Fluorescence Calibration – Blank Subtracted	17
3.3.3 Raw Fluorescence Calibration	18
3.3.4 Depth Calibration	18
3.4 Log Setup Screen	19
3.5 Enabling Data Output Ready State	21
3.6 Downloading and File Management	21
<b>4. Maintenance and Warranty</b>	
4.1 Maintenance	23
4.1.1 Rinsing	23
4.1.2 Care for the Bulkhead Connector	23
4.1.3 Care for the Sensor Ports	23
4.2 Warranty Terms	23
4.3 Warranty Service	24
4.4 Out-of-Warranty Service	24
<b>Appendices</b>	
A Specifications	26
B Recommended Practices	27
C Wiring Guide	28
D Linear Range, Quenching and Temperature Considerations	29
E How to Set up HyperTerminal for Digital (ASCII) Data Capture	30
F Integrator Firmware	32
G Campbell Scientific CR1000 Datalogger Integration	33



## **WASTE ELECTRICAL AND ELECTRONIC EQUIPMENT (WEEE) DIRECTIVE**

Turner Designs is in the business of designing and selling products that benefit the well-being of our environment. Accordingly, we are concerned with preserving the surroundings wherever our instruments are used and happy to work with customers by complying with the WEEE Directive to reduce the environmental impact resulting from the use of our products.

### **WEEE Return Process:**

To arrange the return of an end-of-life product, proceed as follows:

If you purchased your instrument through a Turner Designs Distributor please contact your local representative. They will instruct you where to return the end-of-life product.

If you purchased your instrument directly from Turner Designs please contact Turner Designs Customer Service

By Phone: 1-408-212-4041 or Toll Free: (877) 316.8049

By Email: Customer Service at [support@turnerdesigns.com](mailto:support@turnerdesigns.com)

Turner Designs will provide a WEEE RMA Number, a Shipping Account Number, and a Ship to Address. Package and ship the product back to Turner Designs.

The product will be dealt with per Turner Designs' end-of-life recycling program in an environmentally friendly way.



## 1. Introduction

---

1.1 The C6 Multi-Sensor Platform was designed to integrate up to six Cyclops-7<sup>®</sup> submersible sensors for extended or short-term deployments. The C6 Multi-Sensor Platform provides automatic gain control, calibration, data logging and digital data output for each Cyclops-7 sensor. The C6 Multi-Sensor Platform comes with factory-installed temperature and pressure sensors and is rated to a depth of 600 meters. The C-Soft Windows<sup>™</sup> based user interface allows for intuitive calibration, data logging set up and file downloading. Existing Cyclops-7 users can easily integrate their sensors into the C6 Multi-Sensor Platform.

### 1.2 Important Note Regarding Use of the Fluorescein Sensor

**For C7's manufactured prior to 2/15/2011, the Fluorescein sensor should not be enabled for simultaneous data collection with Chlorophyll and Rhodamine sensors or it will produce unreliable results. For C7's manufactured after 2/15/2011 this interference was designed out. If you would like to send your C7 back to Turner Designs to resolve this, please contact [sales@turnerdesigns.com](mailto:sales@turnerdesigns.com).**



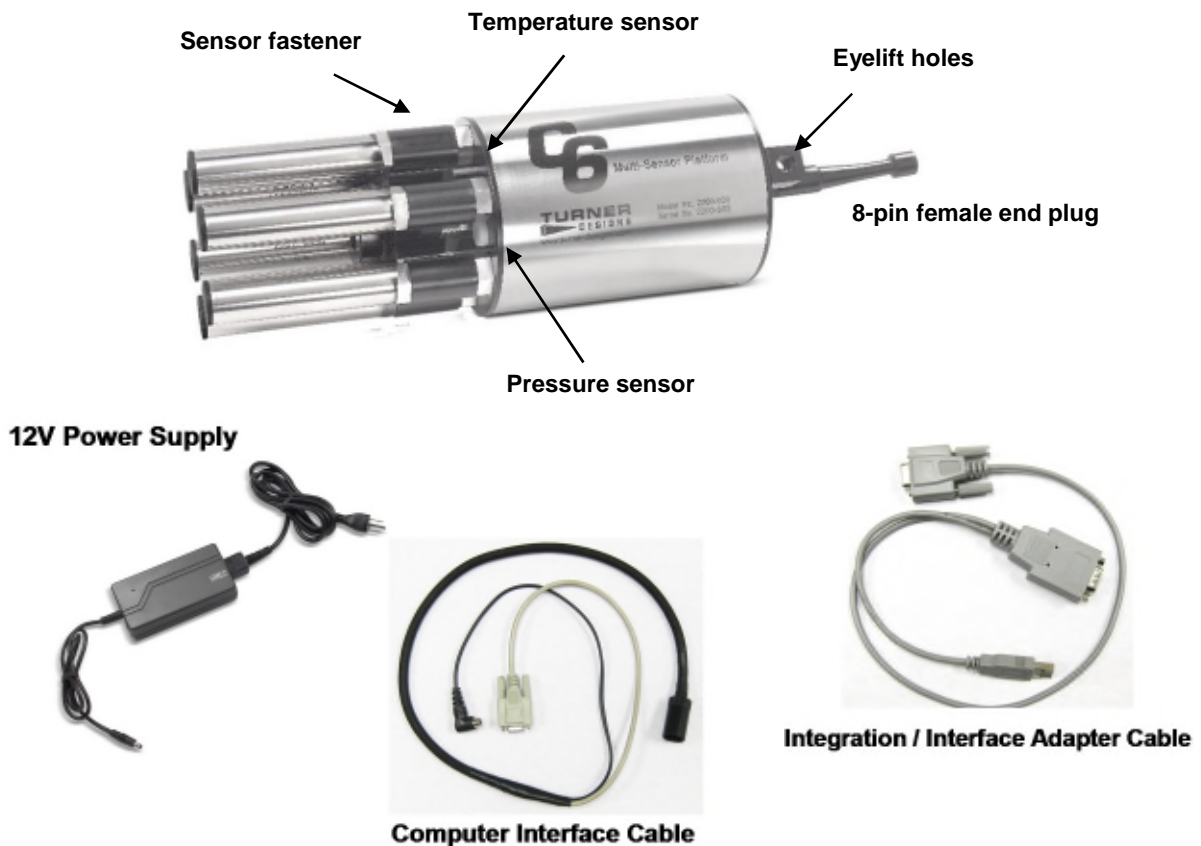
## 2. Inspection and Setup

---

### 2.1 Instrument Checklist

The C6 Multi-Sensor Platform package (P/N: 2200-000) includes:

- ◆ C6 Multi-Sensor Platform
- ◆ Factory-installed pressure sensor
- ◆ Factory-installed temperature sensor
- ◆ Computer Interface cable with 12V power supply
- ◆ Integration / Interface Adapter Cable (*see Appendix F and G for more information about integration*)
- ◆ Sensor fasteners
- ◆ 8-pin female plug
- ◆ USB Flash Drive including C-Soft software, user's manual, cable guide and quick start guide





## 2.2 Optional Accessories:

- ◆ Rechargeable Submersible Battery Pack including charger P/N: 2200-601. See *Accessory Instructions on the USB Flash Drive* for more information.
- ◆ Battery Bracket P/N: 2200-603. See *Accessory Instructions on the USB Flash Drive* for more information.

**Note: Required for use with Battery Pack and Analog Output Adaptor.**

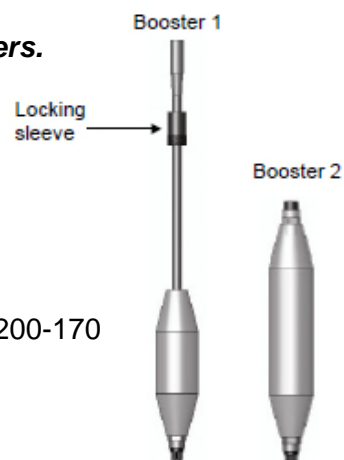
- ◆ High Capacity Submersible Battery with Charger and Cable P/N 3200-600. See *Accessory Instructions on the USB Flash Drive* for more information.
- ◆ C6 Mechanical Wiper P/N: 2200-450 and Replacement Brushes P/N: 2200-460. See *Accessory Instructions on the USB Flash Drive* for more information.
- ◆ 6-pin male plugs P/N: 105-2210
- ◆ Flow Cap P/N: 2200-700. See *Accessory Instructions on the USB Flash Drive* for more information.
- ◆ Shade Cap P/N: 2200-510. See *Accessory Instructions on the USB Flash Drive* for more information. **Note: We recommend use of the shade cap as it provides a fixed distance for calibration and sample measurement and minimizes effects from ambient light.**
- ◆ Solid Secondary Standard (SSS) for *in vivo* Chlorophyll, Phycocyanin, Phycoerythrin, Rhodamine, and Fluorescein P/N: 2100-900. See *Accessory Instructions on the USB Flash Drive* for more information.
- ◆ Solid Secondary Standard (SSS) for UV Sensors – CDOM/FDOM, Optical Brighteners, Refined Fuels and Crude Oil P/N: 2100-904. See *Accessory Instructions on the USB Flash Drive* for more information.



6-pin male plug

**Note: Solid Secondary Standard not available for turbidity.**

- ◆ Booster Kit P/N: 2200-900  
**Note: Required for cable lengths greater than 10 meters.**
- ◆ Extender Cables:
  - ◆ 10 meters P/N: 105-2595
  - ◆ 25 meters P/N: 105-2596
  - ◆ 50 meters P/N: 105-2597
  - ◆ Custom lengths available upon request
- ◆ 24" Pigtail Interface Cable with Locking Sleeve P/N: 2200-170





High Capacity Submersible Battery with Charger and Cable



Battery Bracket



Submersible battery



Shade Cap



Mechanical Wiper

### 2.3 Installing Cyclops-7 Sensors

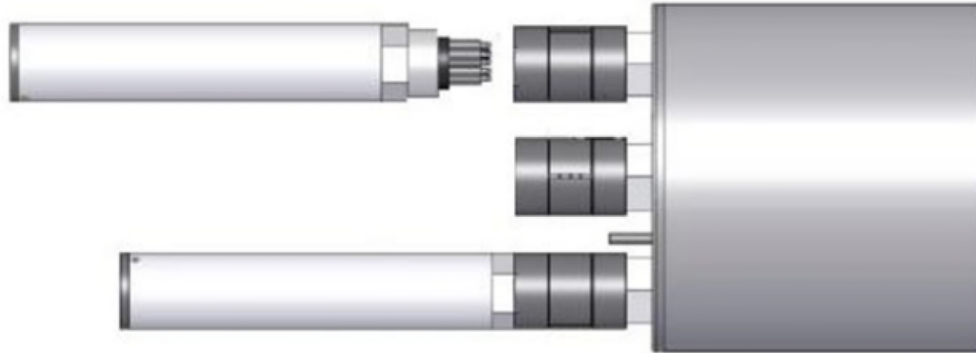
Up to six Turner Designs Cyclops-7 sensors can be installed onto the C6 Multi-Sensor Platform. ***The center port is intended for the optional mechanical wiper only.*** Follow the instructions below to successfully integrate your Cyclops-7 sensor.

1. Place the fastener on one of the Cyclops-7 ports of the C6 Multi-Sensor Platform and rotate to tighten. Make sure not to over tighten.
2. Align the 6-pin male end of the Cyclops-7 sensor with the C6 Multi-Sensor Platform port and fastener and press in the sensor.
3. Hold the Cyclops-7 in place and rotate the remaining ring on the fastener to tighten. This will lock the Cyclops-7 into position.
4. Follow the same installation instructions for the remaining Cyclops-7 sensors.
5. Install a 6-pin male plug onto any unused port on the C6 Multi-Sensor Platform.

**NOTE: To protect your bulkhead connectors from damage, a light coat of Silicone spray should be used on all of the rubber bulkheads and pins to aid in sealing. The manufacturer recommends 3M™ Silicone Lubricant Spray or Loctite 8021 spray. You should avoid using silicone grease. DO NOT USE WD-40 - it will destroy the connectors.**

**Cyclops-7**

**Fastener**







### 3. C-Soft Windows™ User Interface

---

The C-Soft Windows™ based user interface allows for intuitive calibration, data logging set up, and download functions.

#### 3.1 Software Installation and PC Requirements

##### 3.1.1 Minimum PC Requirements

- ◆ 133MHz microprocessor
- ◆ 600 X 800 VGA resolution
- ◆ Microsoft Windows™ 98
- ◆ 32 MB RAM

##### 3.1.2 Software Installation

1. Exit all Windows™ programs
2. Insert the *USB Flash Drive* (also located on the Turner Designs Software / Firmware webpage under Customer Care).
3. Open the C-Soft software folder and double click on the setup icon.
4. The software will automatically be installed in the PC's (C:/Program Files/C6) folder unless user selects alternate location.
5. After restarting the "C-Soft" icon is located on the desktop.



**Note: You may receive a warning message asking if you want to unblock messages, select "Unblock"**

##### 3.1.3 Integration / Interface Adapter Cable Installation

1. Insert the *USB Flash Drive* and install the Adapter Cable driver (Integration-Interface\_Adapter\_Drivers.exe) onto your PC.
2. Make sure nothing is plugged into the Adapter Cable's connectors.
3. Plug the USB connector into a USB port on your computer and wait for hardware to automatically install.
4. Once USB is installed and ready to use, right click the My Computer Icon. **Note: For Windows Vista or 7 users, open the start menu and right click on Computer.**
5. Left click "properties" to open the properties window.
6. If running Windows XP or older versions of Windows, click on the "Hardware" tab and then click "Device Manager" to open the list of devices installed on your computer. **Note: For Windows Vista or 7**



**users, the Device Manager link is located in the upper left part of the properties window; you will not see a Hardware tab.**

7. Scroll down and open the “Ports” heading from the list.
8. The newly installed Adapter will be titled “USB Serial Port” followed by a COM port designation in parentheses (for example, “(COM 5)”).
9. If the USB Serial Port’s COM designation is labeled as any number from 1-6, your installation is complete. Close all windows and make sure to set C-Soft to that specified COM designation when trying to connect via USB Adapter Cable connection.
10. If the USB Serial Port’s COM designation is greater than 6, right click on the “USB Serial Port” and click “properties” which will open up the properties menu. From that menu click on the “Port Setting” tab and then click “Advanced” which will open the advanced settings menu for that USB Serial Port. Choose any COM port 1-6 from the COM port pull-down menu and click “OK”. **Note: Ideally you want to start with any port that is not in use; if all are in use then choose any port 1-6.** Click “OK” to the warning box if it appears and Click “OK” to close any other open menus. Your installation is complete. Make sure to set C-Soft to that specified COM designation when trying to connect via USB Adapter Cable connection.

#### 3.1.4 PC Software Interface

**Note: It is important that the steps be followed IN ORDER. Any variance from the procedure may result in the connection NOT being established.**

1. Plug either the USB or serial connector of the adapter cable into your computer. **Note: Either connection can be used for communicating and configuring the instrument.**
2. Plug the interface cable onto the 8-pin bulkhead connector of the instrument.
3. Plug the interface cable’s serial plug into the adapter cable’s male serial plug.
4. Begin C-Soft by double-clicking on the C-Soft icon and choose the appropriate COM port from the pull down COM menu.
5. Plug the 12V power supply into a power source.
6. Wait for initialization process to complete.



7. The connection icon, located on the upper right of the screen, will turn green if connected.



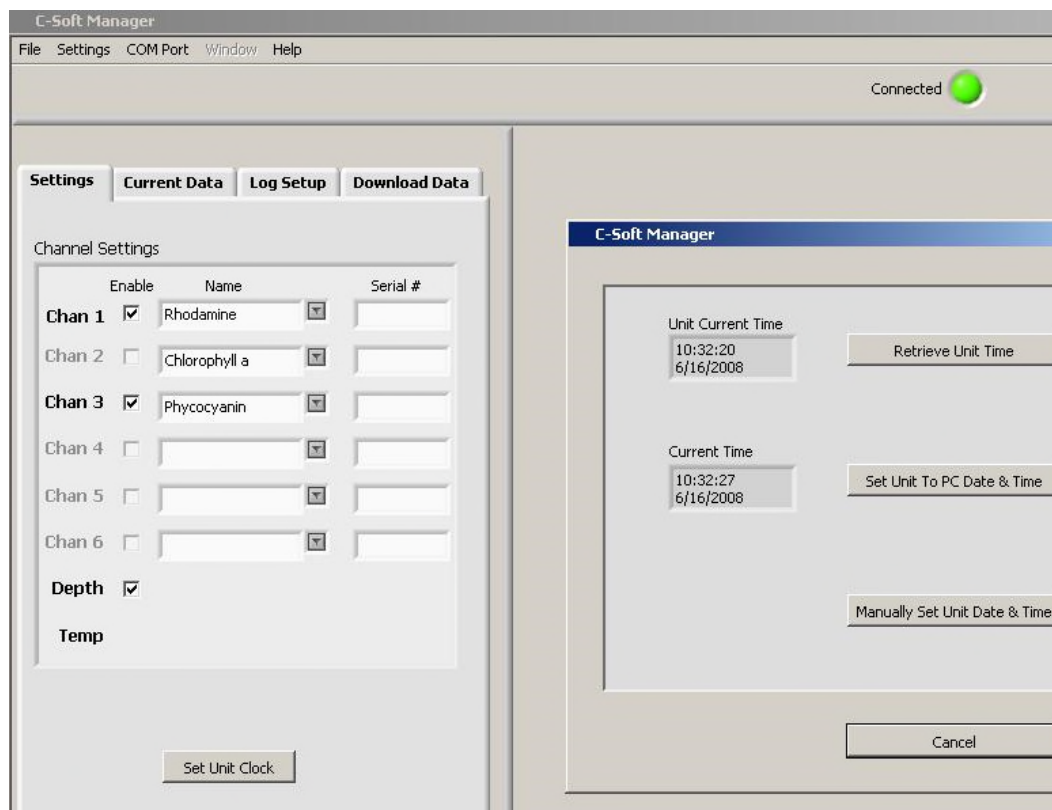
**Note: If the connection icon does not turn green disconnect and reconnect power.**

## 3.2 Software Operation

### 3.2.1 Settings Screen

The Settings Screen allows users to set the time and date, identify each Cyclops-7, update serial numbers and select sensors to be enabled.

- ◆ Users can manually set the date and time or choose to synchronize the C6 Multi-Sensor Platform to the PC date and time.
- ◆ Each channel (1-6) in the Settings Screen has a port associated with it on the C6 Multi-Sensor Platform that is numerically labeled (1-6) respectively.
- ◆ Click on the box adjacent to the channel to enable channel operation. If there is no sensor installed users will be unable to select that channel.
- ◆ Channels can be renamed using the dropdown selections or by manually entering a name.
- ◆ Channels can also be named using Cyclops-7 serial numbers.
- ◆ Settings will automatically be saved after exiting the Settings screen.



### 3.2.2 Current Data and Calibration Screen

The Current Data Screen allows users to view real-time data acquisition, in both tabular and waveform formats as well as conduct calibrations for each channel, and view calibration information.

#### Current Data

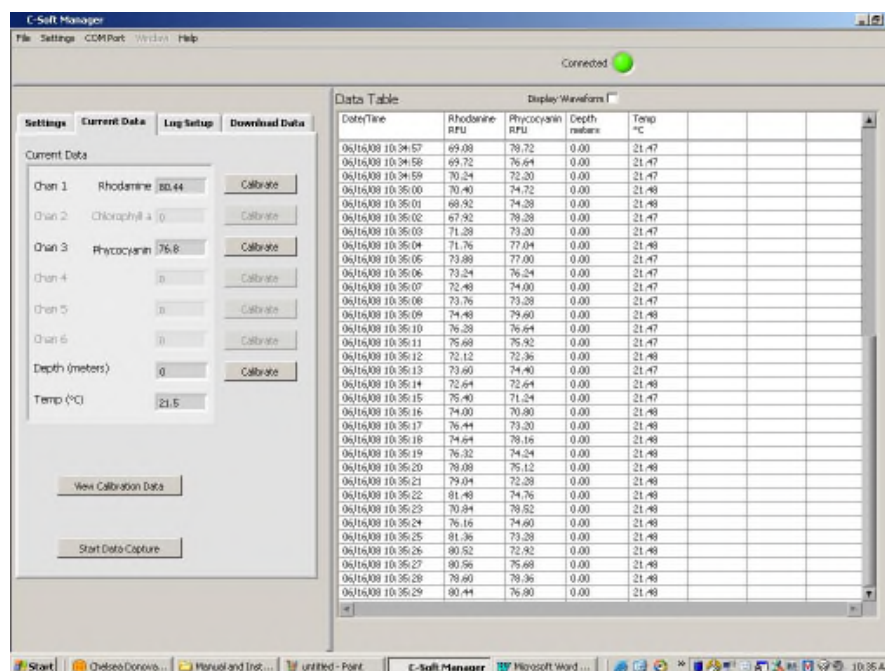
- ◆ Sensor labels are displayed but cannot be changed in the Current Data screen.
- ◆ Real-time values are displayed next to each channel and in the adjacent Data Table.
- ◆ A calibration button is available for all Cyclops-7 sensors and the depth sensor.
- ◆ Real-time data can be saved by selecting the “Start Data Capture” button. Users will be prompted to enter a file name and file location. Data files will be saved in (\*.csv) format.

#### Tabular Screen

- ◆ Real-time data including date, time, units and temperature are continuously scrolling on the tabular screen for enabled sensors.



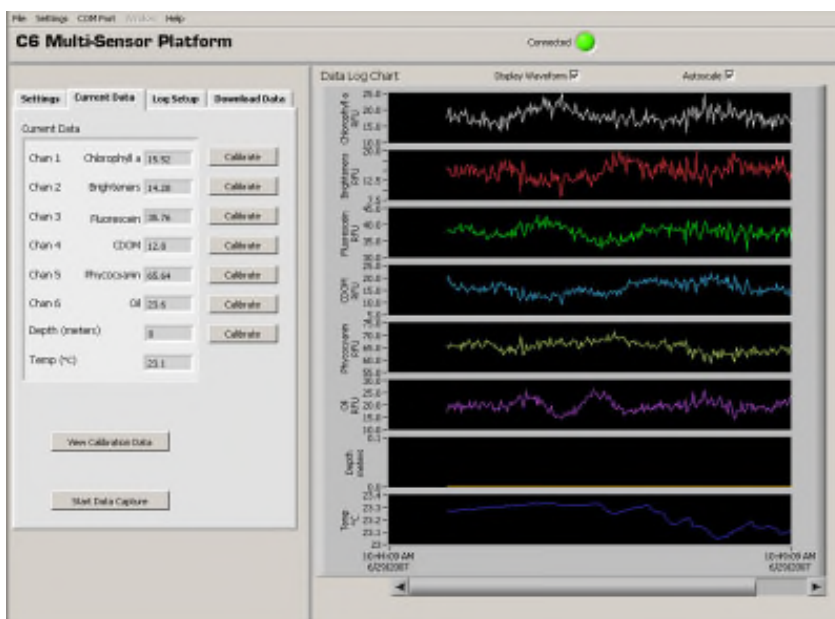
- ◆ Each sensor identification name will appear in the associated column headings.
- ◆ If units are not selected during calibration a relative fluorescence units (RFU) label will appear.



### Waveform Screen

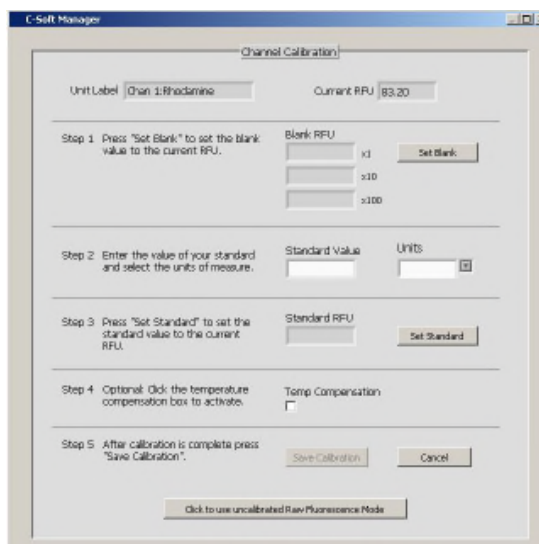
Users can graphically view real-time data for each sensor by clicking the “Display Waveform” box.

- ◆ Sensor identification name and units will be displayed on the Y-axis.
- ◆ Time and date will be displayed on the X-axis.
- ◆ Clicking the “Autoscale” box will automatically scale graphs. Users may also rescale graphs by unchecking the “Autoscale” box and manually entering desired values for either Y or X axis ranges.
- ◆ Data can be saved during waveform mode by clicking “Start Data Capture”. Data files will be saved as .csv format.



### Calibration Screen

Users can calibrate Cyclops-7 sensors in either the direct concentration mode, raw fluorescence mode, or blank subtracted raw fluorescence mode.



The 'Channel Calibration' dialog box contains the following fields and steps:

- Unit Label:** Chan 1: Rhodamine
- Current RFU:** 83.20
- Step 1:** Press "Set Blank" to set the blank value to the current RFU. Includes a 'Blank RFU' field with multipliers: x1, x10, and x100. A 'Set Blank' button is present.
- Step 2:** Enter the value of your standard and select the units of measure. Includes 'Standard Value' and 'UNITS' (dropdown) fields.
- Step 3:** Press "Set Standard" to set the standard value to the current RFU. Includes a 'Standard RFU' field and a 'Set Standard' button.
- Step 4:** Optional: Tick the temperature compensation box to activate. Includes a 'Temp Compensation' checkbox.
- Step 5:** After calibration is complete press "Save Calibration". Includes 'Save Calibration' and 'Cancel' buttons.

At the bottom of the dialog is a button labeled 'Click to use uncalibrated Raw Fluorescence Mode'.



### Direct Concentration Mode

Values reported in the Direct Concentration Mode are scaled to a predetermined standard value and blank subtracted. The equation used to calculate concentrations after calibrating to Direct Concentration Mode is:

$$\frac{\text{Standard Value (units)}}{\text{Standard RFU}} \times \text{Sample RFU} = \text{Concentration (units)}$$

### Raw Fluorescence Mode Blank Subtracted

Values in the Raw Fluorescence Blank Subtracted Mode are noted as RFUB. It is important to note that these values are blank subtracted but are not scaled to a standard, they are **relative** values.

### Raw Fluorescence Mode

Values in the Raw Fluorescence Mode are referred to as “Relative Fluorescence Units” (RFU). It is important to note that these values are not blank subtracted or scaled to a standard, they are **relative** values.

## 3.3 Calibration Procedures

### 3.3.1 Direct Concentration Calibration

Following steps 1-5 will ensure values are reported as Blank Subtracted Concentrations in units of choice. See Appendix B for recommended practices.

#### Step 1: Blanking

- ◆ Place the C6 Multi-Sensor Platform and Cyclops-7 sensors in a blank solution.

**Note: A blank solution is a solution without the fluorophore of interest (i.e. deionized water, artificial seawater, or filtered seawater)**

**Note: Ensure the Cyclops-7 sensors are free of air bubbles.**

- ◆ Wait until “Current RFU” readings have stabilized then select the “Set Blank” button to set the blank value.
- ◆ Wait for the blank value to be measured and set for all 3 gains.

#### Step 2: Standard Value and Units



- ◆ Place the C6 Multi-Sensor Platform and Cyclops-7 sensors in a standard solution for the specific sensor being calibrated or use a solid secondary standard. See Accessory Instructions on the USB Flash Drive for additional information.

**Note: Turbidity sensors do not have solid secondary standards.**

- ◆ Enter the known concentration value of the standard solution or solid standard in the “Standard Value” box. If the concentration is not known, enter an arbitrary value.
- ◆ Enter manually or select desired units from the dropdown menu.

**Note: Do not choose or enter “RFUB” if Direct Concentration Mode is used.**

### **Step 3: Set Standard**

- ◆ When readings in “Current RFU” box have stabilized, select the “Set Standard” button.

### **Step 4: Optional Temperature Compensation**

Temperature compensation is optional; it enables the C6 to compensate for changes in fluorescence due to varying temperatures as detected by the C6’s temperature sensor. Temperature compensation is available for *in vivo* Chlorophyll and Rhodamine sensors only. Temperature is displayed in degree Celsius.

- ◆ Click on the “Temperature Compensation” box.
- ◆ Select either *in vivo* Chlorophyll or Rhodamine from the dropdown menu.
- ◆ Data will now be corrected for temperature fluctuations.

The temperature compensation coefficients for each fluorophore are listed below.

<b>Fluorophore</b>	<b>Coefficient</b>
Rhodamine	0.026 / °C Exponential
<i>in vivo</i> Chlorophyll	1.4% / °C Linear





### **Step 5: Save Calibration**

- ◆ After calibration is complete select “Save Calibration”.
- ◆ Data are now displayed as concentration estimates.

### 3.3.2 Raw Fluorescence Calibration – Blank Subtracted

Following steps 1-5 will ensure values are reported as Blank subtracted Relative Fluorescence Units (RFUB). See Appendix B for recommended practices.

#### **Step 1: Blanking**

- ◆ Place the C6 Multi-Sensor Platform and Cyclops-7 sensors in a blank solution.

**Note: A blank solution is a solution without the fluorophore of interest (i.e. deionized water, artificial seawater, or filtered seawater)**

**Note: Ensure the Cyclops-7 sensors are free of bubbles**

- ◆ Wait until “Current RFU” readings have stabilized then select the “Set Blank” button to set the blank value.
- ◆ Wait for the blank value to be measured and set for all 3 gains.

#### **Step 2: Selecting Units**

- ◆ Select RFUB from the units’ dropdown menu.

**Note: Do not enter a value in the standard value box.**

#### **Step 3: Skip and go to Step 4.**

**Step 4: Optional Temperature Compensation – Follow same steps under the Direct Calibration procedure in section 3.3.1.**

#### **Step 5: Save Calibration.**

- ◆ After calibration is complete select “Save Calibration”.
- ◆ Data are now displayed as blank corrected relative fluorescence units.



### 3.3.3 Raw Fluorescence Calibration

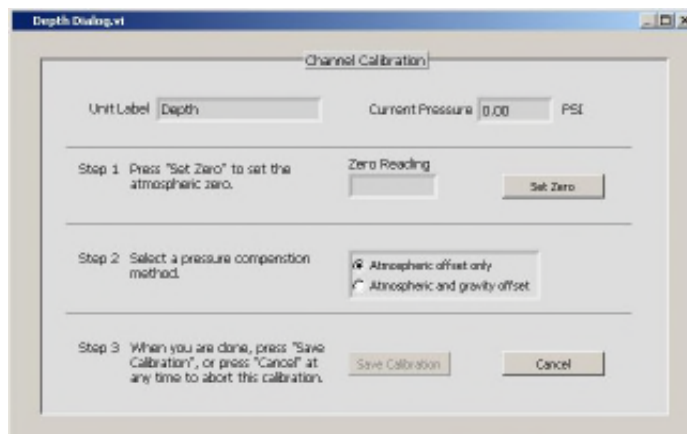
In the Current Data screen select the “calibrate” button next to a specific channel. At the bottom of the Calibration Screen select, “Click to use uncalibrated Raw Fluorescence Mode”. Data for that channel will be uncalibrated and reported as “Relative Fluorescence Units” (RFU).

### 3.3.4 Depth Calibration

**Note: Make sure your instrument is calibrated for depth and there is a value set even if you do not have a depth sensor.**

Depth is displayed in meters only. There are two calibration options for depth calibration:

1. The first uses only the atmospheric pressure as an offset. This is suitable for any shallow application, including most fresh water applications.
2. The second compensates for gravity variations with latitude, as designated from the UNESCO Technical Papers in Marine Science #44 <http://unesdoc.unesco.org/images/0005/000598/059832EB.pdf>. This method assumes 0 °C and 35PSU salinity.



#### Atmospheric Offset (Method 1)

##### Step 1:

- ◆ Select the “Calibrate” button for depth in the “Current Data” screen.
- ◆ Pressure in PSI will be displayed in the “Current Pressure” window.
- ◆ After “Current Pressure” readings are stable at desired location select “Set Zero”.



Step 2:

- ◆ Select “Atmospheric offset only”.

Step 3:

- ◆ Select “Save Calibration” button.
- ◆ Future depth values will be scaled to the offset selected.

### Atmospheric and Gravity Offset (Method 2)

Step 1:

- ◆ Select the “Calibrate” button for depth in the “Current Data” screen.
- ◆ Pressure in PSI will be displayed in the “Current Pressure” window.
- ◆ After “Current Pressure” readings are stable at desired location select “Set Zero”.

Step 2:

- ◆ Select “Atmospheric and gravity offset”.
- ◆ Enter the latitude.

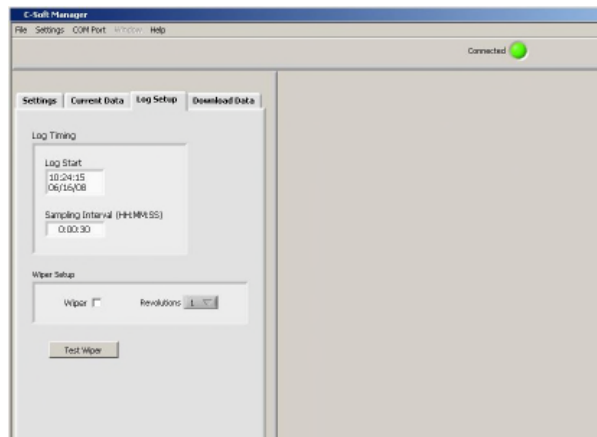
Step 3:

- ◆ Select “Save Calibration” button.
- ◆ Future depth values will be scaled to the offset selected.

### 3.4 Log Setup Screen

The Log Setup screen allows the user to configure a logging session, set the mechanical wiper to its home position, and enable logging. The C6 Multi-Sensor Platform can log over 60,000 lines of data.

- ◆ Enter a log start date (MM/DD/YYYY) and time (HH:MM:SS).



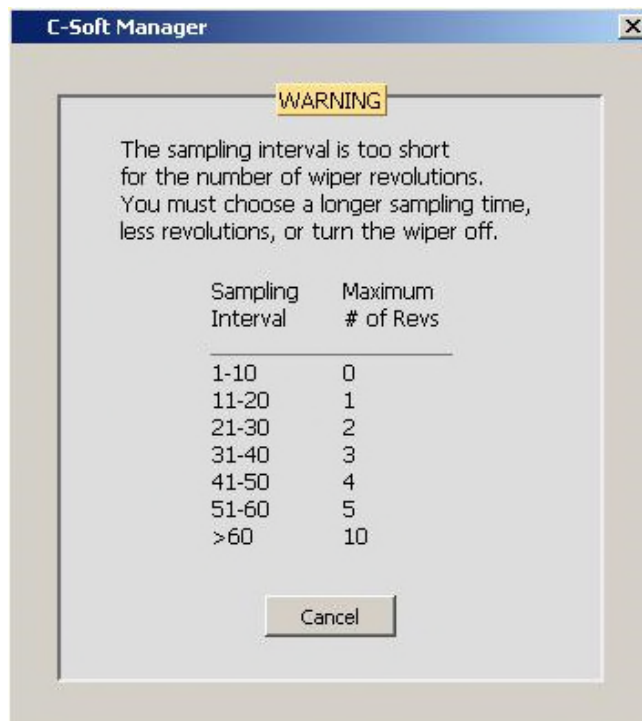
- ◆ Enter the sampling interval (HH:MM:SS). The minimum sampling interval is 1 second.



- ◆ If the mechanical wiper is installed click the “Wiper” box to enable.
- ◆ Select the number of revolutions from the dropdown box (1-10 revolutions). All sensors will be wiped at specified revolutions before each measurement.

**Note: If users select revolutions that exceed sampling interval a warning message will be displayed.**

**Note: Do not click the Wiper Box to enable wiper if the wiper is not installed.**



- ◆ After log set up is complete select “Enable Datalog”. (See section 3.5 “Enabling Data Output Ready State”.)
- ◆ A prompt will appear asking if user is ready to enable logging, select “Yes”.

**Note: If data logging is set to start for a time in the past, there will be a minimum delay of 100 seconds before startup after power has been supplied. Otherwise wait until the data logging start time has been reached for data logging to begin.**

**WARNING! As soon as data logging is enabled users will be unable to conduct calibrations or view current data. This should be the last step before the C6 Multi-Sensor Platform is deployed.**



### 3.5 Enabling Data Output Ready State

The Data Output Ready State must be enabled for the C6 Multi Sensor Platform in order to log data, capture real-time data output, and/or integrate the C6 with other instrumentation. See *Appendix F and G for more information about integration*. There are five necessary steps to ensure the instrument is properly set up for data output:

- 1) Set the instrument's clock to PC or local time in the Settings Tab.
- 2) Select the sensors you expect to use during sampling.
- 3) Calibrate selected sensors for either Direct Concentration Mode or Raw Fluorescence Units Blanked (RFUB) Mode (see section 3.2.2).
- 4) Set the start time, sampling, and wiping intervals in the Log Setup Tab.  
**Note: Wiping interval is optional and depends on the sampling interval (see section 3.4).**
- 5) Click the 'Enable Datalog' button followed by the 'Yes' button to enable the Data Output Ready State.

**Note: Use the Battery Life Calculator available on the Turner Designs website C6 product page to calculate a conservative estimation of how many days you can expect to log data. Factors such as battery charge and water temperature will affect logging days.**

A few seconds after the 'Yes' button has been clicked to enable the Data Output Ready State, the C-Soft program will automatically shut down and users must disconnect power and serial connections. The instrument is now in the Data Output Ready State and will remain in that state so long as C-Soft is not used to communicate with the instrument. **Note: As soon as C-Soft is used to communicate with the instrument, users will need to re-set the parameter settings in the Log Setup (section 3.4) and again enable datalog to put the instrument into the Data Output Ready State.**

When power is supplied to the instrument while it is in the Data Output Ready State, it will begin streaming data after a 100 second delay. If power is cycled (i.e. disconnected and reconnected) please allow 100 seconds for the data stream to begin. **Note: Check the optical face when power is supplied to make sure the sensors light. The sensor will turn on, then off and then turn back on in 100 seconds. If this sequence does not happen, cycle power.**

The C6 Multi Sensor Platform's output is in digital (ASCII) format.

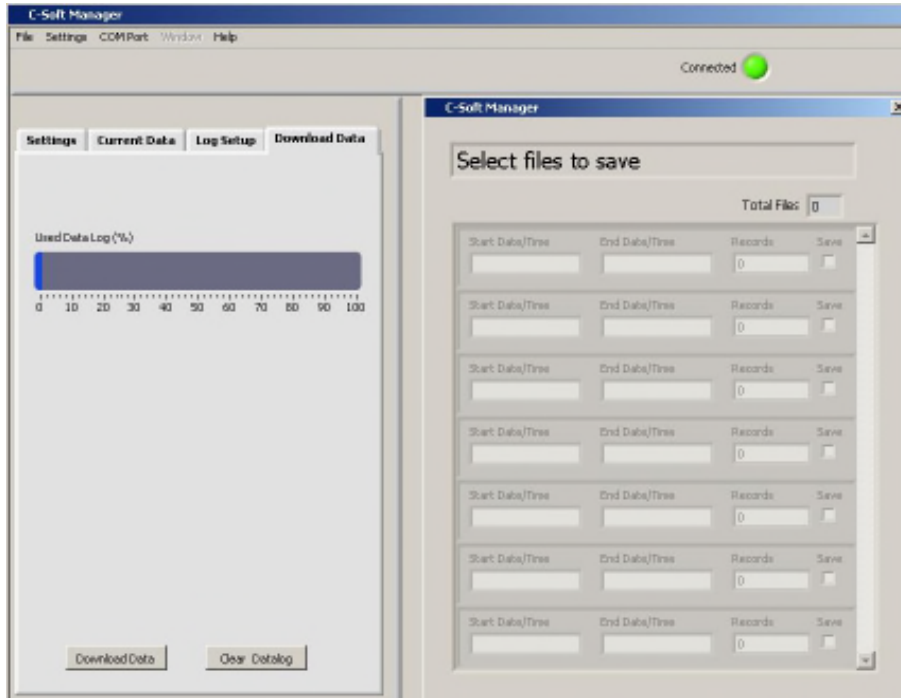
### 3.6 Downloading and File Management

Users can download new and existing files saved in the C6 Multi-Sensor Platform.

- ◆ Select Download Data. **Note: This step may take several minutes depending on file size.**



- ◆ When download has completed choose the files to be saved by clicking the “Save” box.
- ◆ Users will be prompted to choose a folder location where data will be saved.
- ◆ Files will be saved in a .CSV format.



- ◆ Select “Clear Datalog” to erase existing data from memory.
- ◆ Users are able to upload data and view in the “Current Data” window if desired.

**Note: If you have problems downloading data in C-Soft, you may have limited space in the cache memory on your computer. We recommend you do a Disk Cleanup to see if that solves the problem and allows you to download files. Disk Cleanup can be found in the following location on most Windows versions:**

**Start Menu → Programs → Accessories → System Tools → Disk Cleanup**

**After the initial scan of the computer completes, customers should select all the boxes and select OK to perform the cleanup.**



## 4. Maintenance and Warranty

---

### 4.1 Maintenance

#### 4.1.1 Rinsing

The C6 Multi-Sensor Platform should be rinsed or soaked in fresh water following each deployment.

#### 4.1.2 Care for the bulkhead connector

Install the 8-pin female end plug to the bulkhead between uses. A light coat of Silicone spray should be used on the rubber of the male pins of the bulkhead to aid in sealing. The manufacturer recommends 3M™ Silicone Lubricant Spray or Loctite 8021 spray. **Note: You should avoid using silicone grease. Do NOT use WD-40, it will destroy the connectors.**

#### 4.1.3 Care for the sensor ports

Install 6-pin male plugs onto any vacant port. A light coat of Silicone spray should be used on the rubber of the male pins of the bulkhead to aid in sealing. The manufacturer recommends 3M™ Silicone Lubricant Spray or Loctite 8021 spray. **Note: You should avoid using silicone grease. Do not use WD-40. It will destroy the connectors.**

### 4.2 Warranty Terms

Turner Designs warrants the C6 and accessories to be free from defects in materials and workmanship under normal use and service for a period of 12 months from the date of shipment from Turner Designs with the following restrictions:

- Turner Designs is not responsible for replacing parts damaged by accident or neglect. Your instrument must be installed according to instructions in the User's Manual. Damage from corrosion is not covered. Damage caused by customer modification of the instrument is not covered.
- This warranty covers only Turner Designs products and is not extended to equipment used with our products. We are not responsible for incidental or consequential damages, except in those states where this limitation is not allowed. This warranty gives you specific legal rights and you may have other rights which vary from state to state.
- Damage incurred in shipping is not covered.



#### 4.3 Warranty Service

To obtain service during the warranty period, the owner shall take the following steps:

1. Write, email or call the Turner Designs Technical Support department and describe as precisely as possible the nature of the problem.

**Phone:** 1 (877) 316-8049

**Email:** [support@turnerdesigns.com](mailto:support@turnerdesigns.com)

2. Carry out any adjustments or tests as suggested by the Technical Support Department.
3. If proper performance is not obtained you will be issued a Return Materials Authorization number (RMA) to reference. Package the unit, write the RMA number on the outside of the shipping carton, and ship the instrument, prepaid, to Turner Designs. If the failure is covered under the warranty terms, the instrument will be repaired and returned free of charge, for all customers in the contiguous continental United States.

For customers outside of the contiguous continental United States who purchased equipment from one of our authorized distributors, contact the distributor. If you purchased directly, contact us. We will repair the instrument at no charge. Customer pays for shipping duties and documentation to Turner Designs. Turner Designs pays for return shipment (custom duties, taxes and fees are the responsibility of the customer).

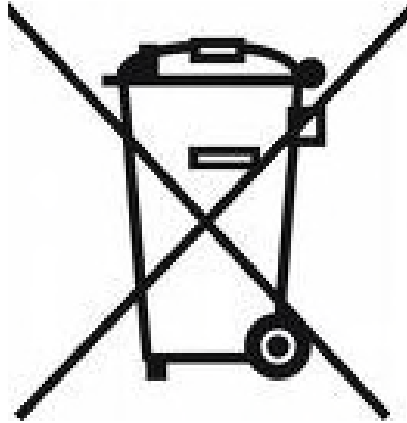
#### 4.4 Out-of-Warranty Service

Follow steps for Warranty Service as listed above. If our Technical Support department can assist you by phone or correspondence, we will be glad to, at no charge. Repair service will be billed on a fixed price basis, plus any applicable duties and/or taxes. Shipment to Turner Designs should be prepaid. Your bill will include return shipment freight charges.

**Address for Shipment:**

Turner Designs, Inc.  
845 W. Maude Ave.  
Sunnyvale, CA 94085







## Appendix A: Specifications

<b>C6 Multi-Sensor Platform</b>	
Weight in Air	2.74 kg (6.0 lbs) (without sensors, submersible battery, or wiper)
Weight in Water	1.6 kg (3.4 lbs)
Length	25.8 cm (10.2 in)
Length with Sensors Attached	33.8 cm (13.3 in)
Diameter	10.2 cm (4.0 in)
Material	316 Stainless Steel; Delrin
Temperature	-2 to 50 °C.
Depth	0-600 meters
DC Power Required	8 to 30 volts; 2.2 amperes
Maximum Current Draw at 12 volts	Operational = 200 mA
	Sleep = 3 mA
Signal Output	Digital (ASCII)
Interface	RS232
Minimum Sampling Interval	1 second
Nonvolatile Memory	Over 60,000 Data Lines

<b>Submersible Battery Pack</b>	
Battery	Lithium-Ion
Weight in Air	0.75 kg (1.65 lbs)
Weight in Water	0.22 kg (0.50 lbs)
Length	13.46 cm (5.3 in)
Diameter	7 cm (2.75 in)
Material	Delrin
Temperature	-2 to 50 °C.
Depth	0-600 meters
Capacity	2,200 mAH
Voltage Output	14.8V nominal
Protection Features	Protects against: overcharge, over-discharge, over-heating, short-circuiting



## Appendix B: Recommended Practices

---

### Description

The Turner Designs C6 Multi-Sensor Platform can be used with Cyclops-7 sensors for many different applications. It can also be integrated into a multi-parameter system. It is capable of logging and storing data and uses algorithms to compute direct concentrations of fluorophores.

### Identification

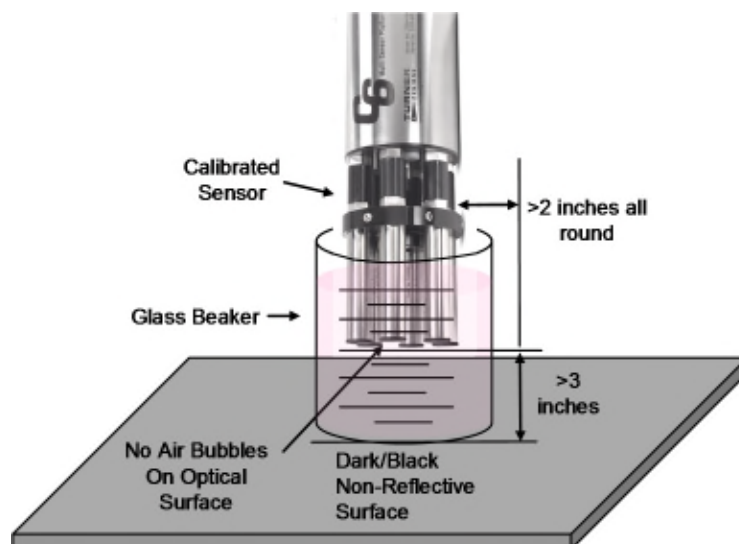
Each Cyclops-7 Sensor is identified by a letter stamped into the connector:

“C” = Chlorophyll, “U” = CDOM/FDOM, “O” = Crude Oil, “F” = Fluorescein, “B” = Optical Brighteners, “P” = Phycocyanin “E” = Phycoerythrin, “R” = Rhodamine, “A” = PTSA, “T” = Turbidity, and “G” = Refined Oil/Fuels.

### Recommended Measurement Practices

The following steps will improve the accuracy and repeatability of your measurements, especially at low concentration levels:

1. Use a dark plastic or glass container for your standards and/or samples. **Note: Some plastics may fluoresce and might interfere with measurements.**
2. If using a glass beaker, place it on a non-reflective surface, preferably black.
3. Ensure that the sensor is **more than 3 inches above the bottom** of the container.
4. Ensure that the sensor is in the center of the container and has **more than 2 inches clearance** between the sensor and the inside surface of the container.
5. If using a glass beaker, check if the optical surface of the sensor is free of air bubbles. Remove air bubbles if any are observed. If using a dark plastic container, run the wiper or your finger over the optical sensors to ensure the sensor heads are **free of air bubbles**.



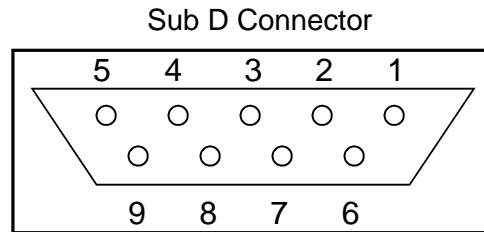
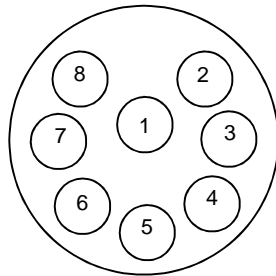


## Appendix C: Wiring Guide

The C6 Multi-Sensor Platform outputs digital data in a format that can be read by C-Soft software or a terminal emulator program. It can be integrated into larger multi parameter systems such as CTDs or buoys (refer to Appendix F and G for additional information).

An 8-pin impulse cable provides two end connections: 1) a 9-pin RS232 serial port for connection to a PC or laptop computer and 2) a 12V port for supplying power to the unit.

### C6 Multi Sensor Platform bulkhead and serial port connectors



### Wire Guide

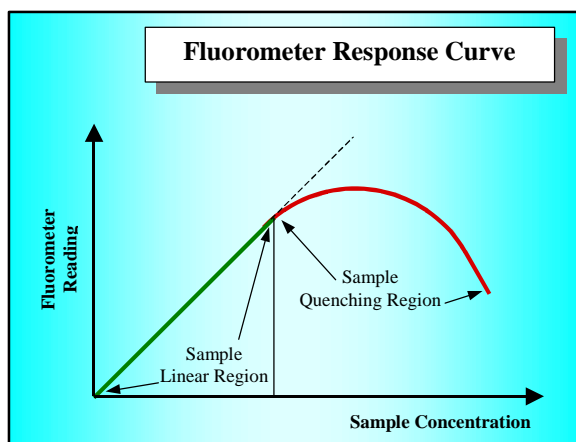
Pin Out	Color	C6 Function	Corresponding Sub D Connector Pin
1	Black	V BATT (+)	Power Connector Cable – Center Pin (+)
2	White	V BATT (-)	Power Connector Cable – Housing (-)
3	Red	GND	PIN 5
4	Green	RX	PIN 2
5	Blue	TX	PIN 3
6	Brown	DTR & DSR	PIN 4, 6
7	Yellow	RTS & CTS	PIN 7, 8
8	Orange	N/A	N/A

## Appendix D: Linear Range, Quenching and Temperature Considerations

The linear range is the concentration range in which the Cyclops-7 output is directly proportional to the concentration of the signal. The linear range begins with the smallest detectable concentration and spans to an upper limit (concentration) that is dependent upon the properties of the material, filters used, and path length.

A non-linear relationship is seen at very high concentrations where the signal does not increase at a constant rate in comparison to the change in concentration (see figure below). At even higher concentrations, the signal will decrease even though the sample concentrations are continuing to increase. This effect is known as “signal quenching”.

Linearity can be checked by diluting a sample 1:1 or some other convenient ratio. If the sample is still in the linear range, the reading will decrease in direct proportion to the dilution. If the reading does not decrease in direct proportion to the dilution, or if the reading increases, the sample is beyond the linear range.



*Graph showing Linear and Quenching Regions of the sample's response*

### Temperature Considerations

Fluorescence is temperature sensitive. As the temperature of the sample increases, the fluorescence decreases. For greatest accuracy, record the sample temperature and correct the sensor output for changes in temperature.

For further information on how temperature, light, water quality and the physiological state of the algal cells can all affect the measurement of chlorophyll, please refer to the application section of Turner Designs' website.

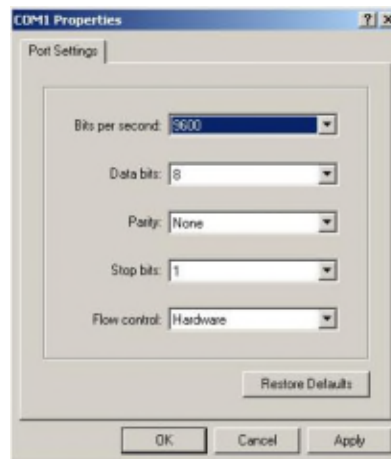


## Appendix E: How to set up HyperTerminal for Digital (ASCII) Data Capture

Ensure C-Soft program is not running in the background. On an MS Windows computer, open the HyperTerminal program (Start→ Programs→ Accessories→ Communications→ HyperTerminal)

1. The **Connection Description** screen will appear. Name the connection description. This file will save the communication parameters for the C6 Multi-Sensor Platform and can be used in the future to establish communication with the instrument quickly.
2. The **Connect To** screen will appear. Choose the appropriate communications port in the **Connect Using** window. Click **OK**.
3. The **Port Settings** screen will appear. Choose the following port settings:

Bits per second: 9600  
Data bits: 8  
Parity: None  
Stop bits: 1  
Flow control: Hardware  
Click **Apply** and **OK**



4. Next, the **HyperTerminal** window will appear. You are now ready to connect the C6 Multi-Sensor Platform to a power source. Data will be displayed at set intervals in the HyperTerminal window after 100 seconds or at the specified log start time.

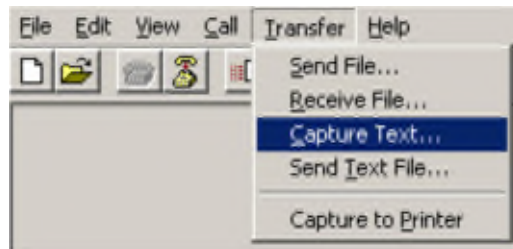
Date	Time	Rhodamine	Phycocyanin	Depth	Temp C
6/16/08	15:07:24	50.65	129.70	0.00	23.71
6/16/08	15:07:25	51.09	130.71	0.00	23.72
6/16/08	15:07:26	51.01	130.83	0.00	23.72
6/16/08	15:07:27	51.23	130.95	0.00	23.72
6/16/08	15:07:28	51.09	130.95	0.00	23.72
6/16/08	15:07:29	51.01	130.92	0.00	23.72
6/16/08	15:07:30	51.23	131.10	0.00	23.72



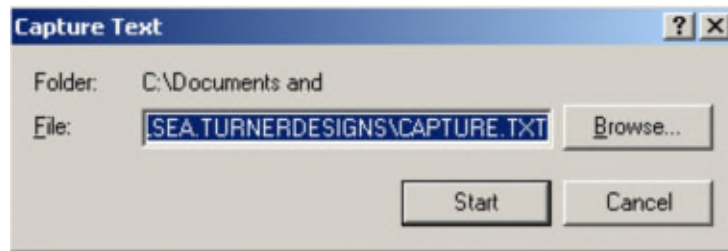
Most applications will integrate streaming data. Below are instructions on how to save streaming data on a PC.

**To save data:**

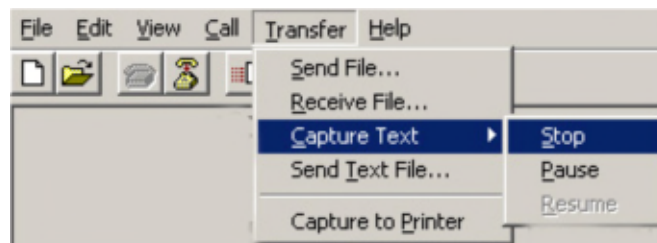
1. On the HyperTerminal window toolbar, choose Transfer and then Capture Text



2. When you click on Capture Text, a window will appear asking you to **name** and **save** the **.txt** file to the location of interest.



3. Once you are finished, you will need to return to the HyperTerminal window toolbar, choose **Transfer** and then **Capture Text** and select **Stop**. This will stop data capture to the **.txt** file.





## Appendix F: Integrator Firmware

---

Turner Designs offers Integrator Firmware. This firmware is designed for use by customers that are integrating their C6 with an external datalogger, CTD or similar system. The Integrator Firmware is different from the standard C6 firmware and has some features that users need to consider before installing:

1. Internal datalogging is **NOT** possible with this version of firmware. The Integrator Firmware is intended for data output only.
2. The data output rate defined by this Integrator Firmware is 1 second and cannot be changed to reflect longer or shorter data output rates.
3. Once power is applied there is a 15 second delay before data output starts at a 1 second interval.
4. If the wiper is enabled, it will rotate the set number of rotations upon powering the instrument and every 5 minutes as long as power is continuously supplied.
5. Sleep mode is disabled; therefore as long as power is continuously supplied the instrument will continue to stream data at a 1 second interval.

**Download Firmware on the Turner Designs website**

<http://www.turnerdesigns.com/customer-care/software-a-firmware>





## Appendix G: Campbell Scientific CR1000 Datalogger Integration

This document assumes you have experience connecting to your CR1000. The procedure of interfacing the C6 Multi-Sensor Platform is described in four sections.

- Wiring the CR1000 to a PC
- Configuring the RS-232 port on the CR1000
- Connecting the C6 to the CR1000
- Loading the CRBasic program (C3\_C6\_Datalogging\_v2.CR1) onto the CR1000. This file can be found on our website at the following address:

[http://www.turnerdesigns.com/t2/sw/C3\\_C6\\_Datalogging-CR1.zip](http://www.turnerdesigns.com/t2/sw/C3_C6_Datalogging-CR1.zip)

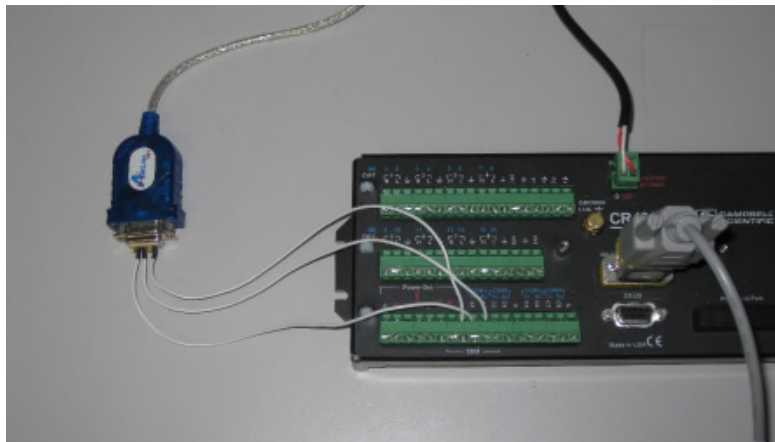
**Note: Sections 2 and 4 require Campbell Scientific PC200W software. Campbell Scientific PC200W software can be found at the following web address:**

<http://www.campbellsci.com/downloads?sb=PC200W&c=9999>.

### 1. Wiring the CR1000 to a PC

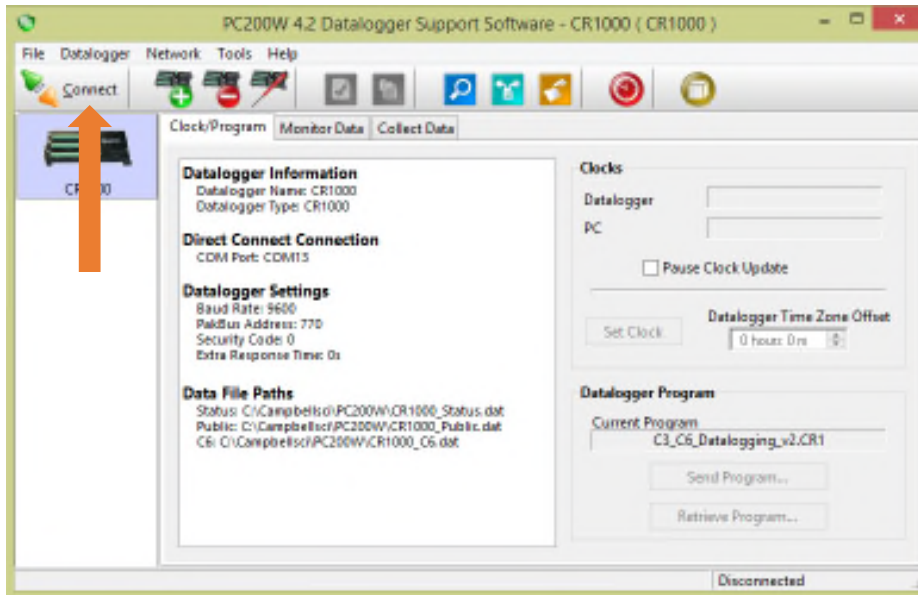
Typical communication between a PC and a CR1000 uses the RS-232 port on the CR1000. However, the C6 requires RS-232 logic levels and therefore it will need to occupy the RS-232 port. As a result, the PC will communicate with the CR1000 using 'COM1' on the lowest terminal block. In order for the PC and the CR1000 to communicate, your PC will need a serial port. The only pins used on the DB9 serial connector are 2, 3, and 5.

DB9 Connector from PC	CR1000
Pin 2	COM1 TX(C1)
Pin 3	COM1 RX(C2)
Pin 5	G(Ground)

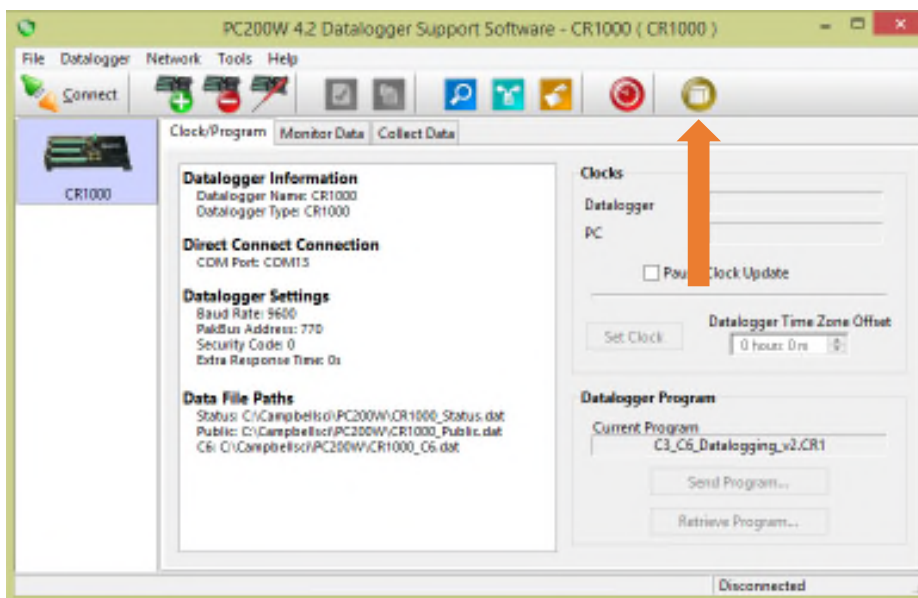


2. Configuring the RS-232 port on the CR1000.

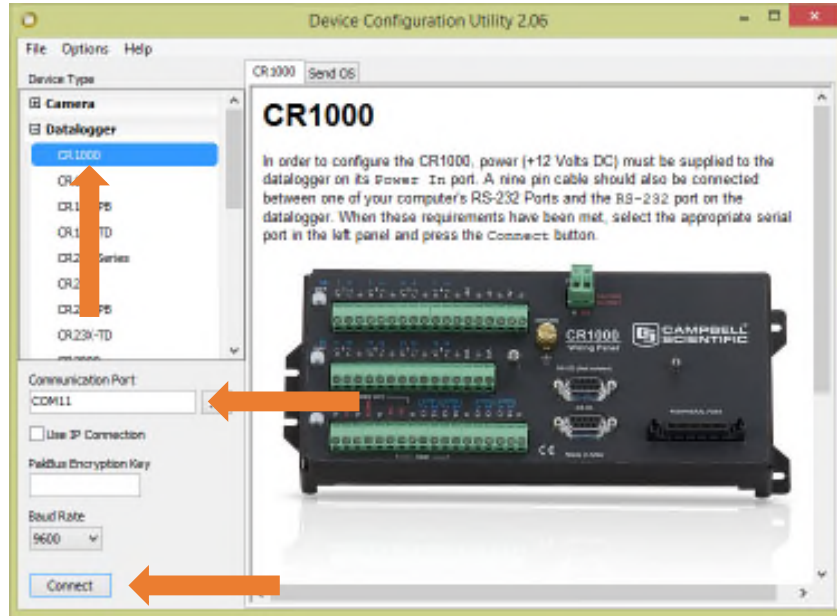
2.1 After the CR1000 is powered and wired to your PC as described in section 1, connect to the CR1000 by clicking on "Connect" in the upper left corner of the PC200W Datalogger Support Software.



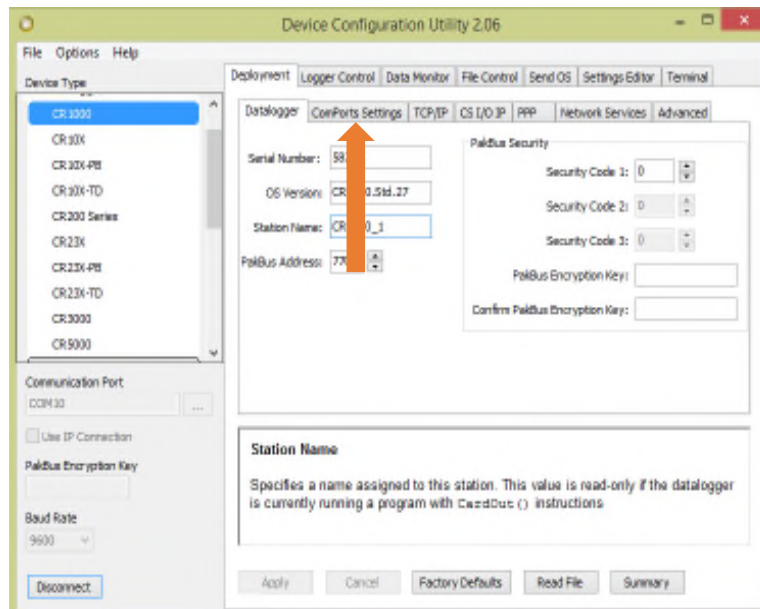
2.2 Double click on the Device Configuration Utility icon in the toolbar of PC200W.



2.3 A new window will open titled “Device Configuration Utility 2.06”. Under “Device Type” in the left panel, highlight the CR1000. Select the correct com port, then click “Connect”.

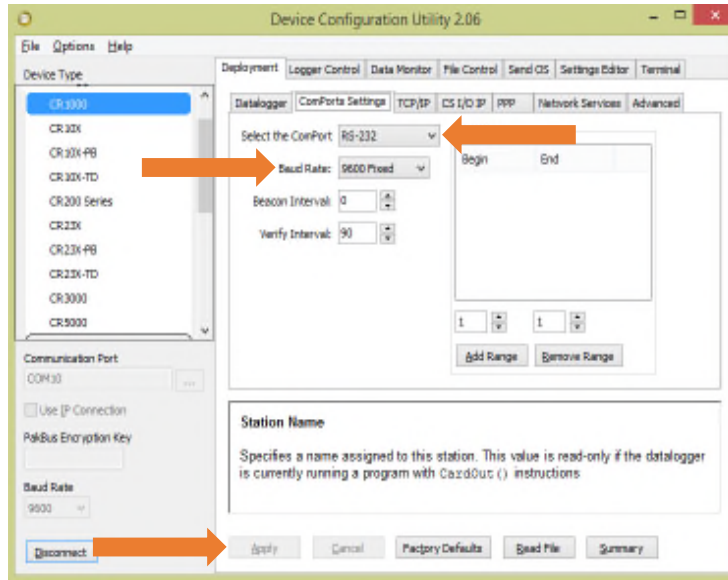


2.4 A warning message will come up asking you to bypass checking for com port conflicts with the local server, click “Bypass”. The warning message window will close. Within the remaining “Device Configuration Utility 2.06” window, click on the “ComPorts Settings” tab.





2.5 Next to “Select the ComPort”, click the dropdown menu and select “RS-232”. Next, select a “Baud Rate” of “9600 Fixed”. Then click “Apply”. At this point, you are done with the Device Configuration Utility. Click on “Disconnect”.



### 3. Connecting the C6 to the CR1000

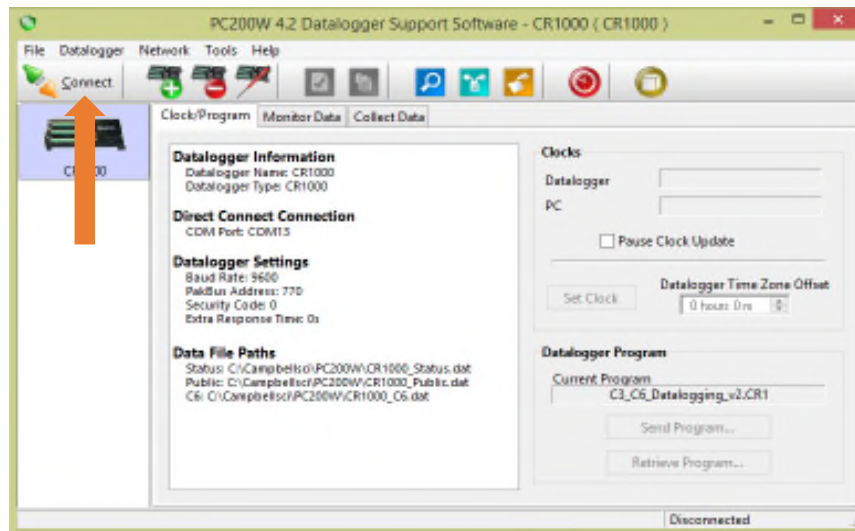
3.1 The C6 uses RS-232 logic levels, therefore, communication between the CR1000 and the C6 must be on the RS-232 port of the CR1000. The configuration of this port is described in section 2. Connect the 8 pin female underwater connector end of P/N 2200-150 to the C6. Connect 9 pin female DB9 end of P/N 2200-150 to the male 9 pin DB9 on P/N 2300-115.

3.2 Between the C6 Communication and Integration cable P/N 2300-115 and the CR1000 RS-232 port, you must add a null modem device. The image below shows the C6 instrument with the proper cables connected and the null modem device added.

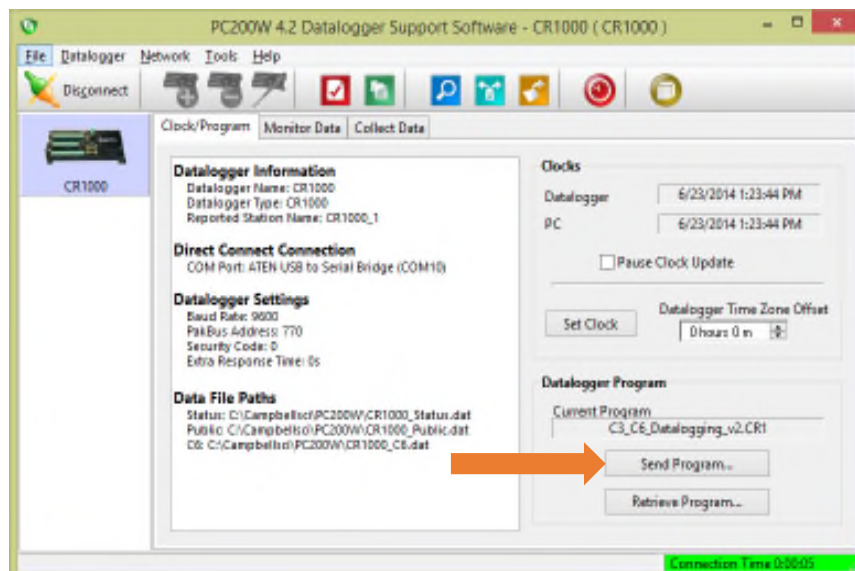


4. Loading the CRBasic program onto the CR1000 using PC200W software

4.1 After the CR1000 is powered and wired to your PC as described in section 1, connect to the CR1000 by clicking on "Connect" in the upper left corner of the PC200W Datalogger Support Software.

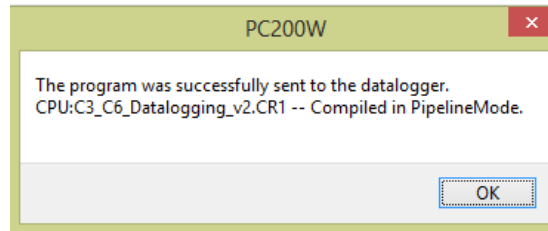


4.2 After connecting, the GUI will display a "Connection Time" in the lower right corner. Click on the "Send Program" button. The delivery of the \*.CR1 file will cause all data on the CR1000 to be deleted. The GUI will prompt you if this is OK. Click "Yes". Navigate to the directory where you have the C3\_C6\_Datalogging\_v2.CR1 file, highlight it, and then click "Open".

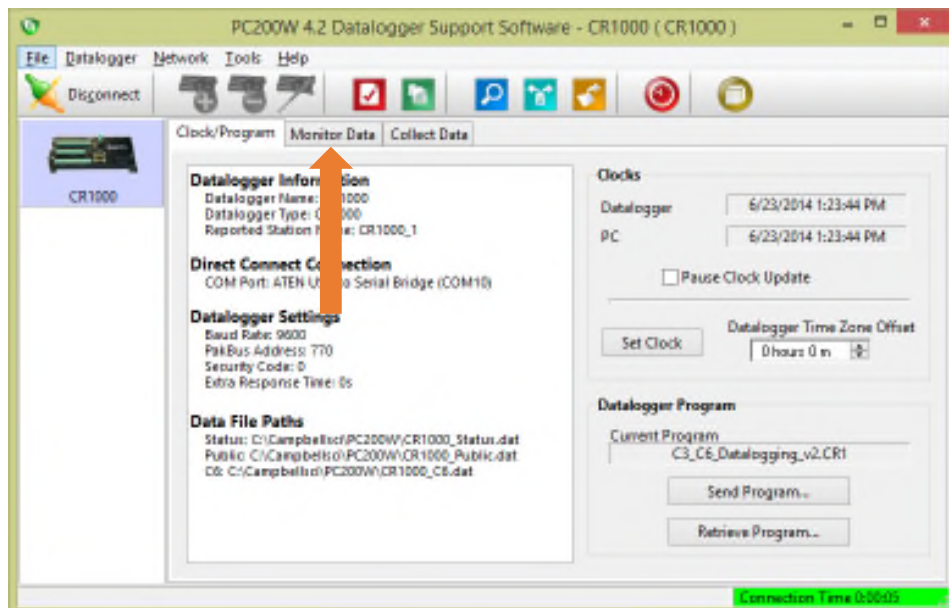




4.3 Successful compilation of the program by the CR1000 will result in a message box like the one below. Click on “OK”.



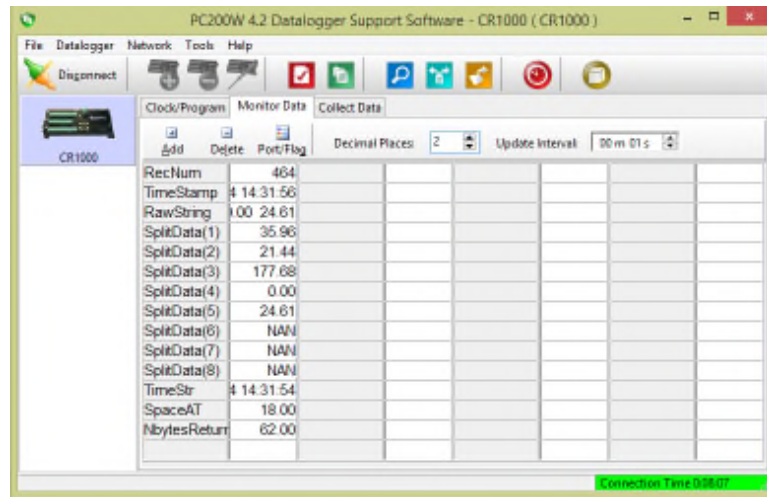
4.4 Click on the “Monitor Data” tab.





4.5 The GUI will change to reflect the image below.

- The “RecNum” field is representative of record number. This value should be increasing at a rate of 1 every 10 seconds.
- The “TimeStamp” is the time of the measurement as kept by the CR1000. This timestamp is independent of the timestamp delivered by the C6, which is contained in the “RawString” field.
- The “RawString” field contains the serial string as delivered by the C6. “SplitData” fields are the parsed records from the C6 serial data string.
- “SplitData (1)” through “SplitData (6)” represent channels 1 through 6.
- “SplitData (7)” and “SplitData (8)” represent depth and temperature respectively.



4.6 For reference, the serial data string coming from a C6 into a terminal program is displayed below.

Date	Time	Chlorophyll	Oil	Turbidity	CDOM	Phycoceryth	Phycocyan	Depth	Temp C
4/02/08	11:45:00	0.00	158.00	1.20	47.40	0.00	59.60	0.00	21.83
4/02/08	11:45:01	0.00	158.00	1.20	47.40	0.00	59.60	0.00	21.83
4/02/08	11:45:02	0.00	158.00	1.20	47.40	0.00	59.60	0.00	21.83
4/02/08	11:45:03	0.00	158.00	1.20	47.40	0.00	59.60	0.00	21.83
4/02/08	11:45:04	0.00	158.00	1.20	47.40	0.00	59.60	0.00	21.83
4/02/08	11:45:05	0.00	119.72	0.00	11.80	0.00	39.12	0.00	21.83
4/02/08	11:45:06	0.00	119.72	0.00	12.00	0.00	35.96	0.00	21.83
4/02/08	11:45:07	0.00	116.40	0.00	12.84	0.00	36.68	0.00	21.83
4/02/08	11:45:08	0.00	118.52	0.24	10.92	0.00	40.40	0.00	21.83
4/02/08	11:45:09	0.00	120.56	0.00	12.40	0.00	35.16	0.00	21.84
4/02/08	11:45:10	0.00	120.60	0.00	10.80	0.00	36.76	0.00	21.81
4/02/08	11:45:11	0.00	117.60	1.52	9.24	0.00	39.12	0.00	21.83
4/02/08	11:45:12	0.00	118.40	0.00	13.20	0.00	42.44	0.00	21.83
4/02/08	11:45:13	0.00	117.92	0.00	13.96	0.00	37.36	0.00	21.83
4/02/08	11:45:14	0.00	117.08	0.00	13.60	1.71	31.28	0.00	21.83
4/02/08	11:45:15	0.00	119.48	0.00	9.92	0.16	36.76	0.00	21.84
4/02/08	11:45:16	0.00	119.56	3.64	14.00	0.00	41.36	0.00	21.83
4/02/08	11:45:17	0.00	119.64	0.20	13.72	0.12	42.80	0.00	21.84
4/02/08	11:45:18	0.00	118.20	0.00	9.56	0.00	30.40	0.00	21.84
4/02/08	11:45:19	0.00	119.00	0.36	11.84	0.00	32.62	0.00	21.83
4/02/08	11:45:20	0.00	118.92	0.00	13.24	0.00	38.28	0.00	21.84
4/02/08	11:45:21	0.00	120.64	1.56	13.16	1.17	37.76	0.00	21.84
4/02/08	11:45:22	0.00	120.04	0.00	12.28	0.00	34.68	0.00	21.84
4/02/08	11:45:23	0.00	121.28	0.00	13.20	0.00	34.76	0.00	21.83